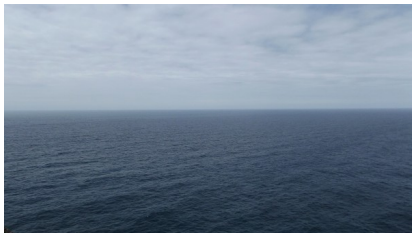


Analysis of Caesium Sampling



Colin Millar
European Commission
Joint Research Center

Outline

Data is provided by the Japanese Fisheries Agency

Description of the analysis

The data for prefectures around Fukushima:

Iwate, Miyagi, Fukushima, Ibaraki and Chiba.

Focus on the Fukushima prefecture data

Summary

Fisheries Agency Data

<http://www.jfa.maff.go.jp/e/inspection/index.html>

The screenshot shows a web browser window with the URL www.jfa.maff.go.jp/e/inspection/index.html. The page is titled "Results of the inspection on radioactivity level in fisheries products - Chromium". The Fisheries Agency (FA) logo is visible in the top left, and the Japanese text "水産庁" (Minsan-chō) is in the top right. A navigation bar includes "Top page", "Links", and "Japanese". A search bar is located on the right. The main content area is titled "Results of the inspection on radioactivity materials in fisheries products". It contains a paragraph explaining the inspection process, followed by a section "1. List of the inspection results". Under this section, there are two sub-sections: "Excel file" and "PDF file", each with a list of links to inspection results for various periods.

水産庁/Results of the inspection on radioactivity level in fisheries products - Chromium

stat_smooth, ggplot2 0.5, Lateolabrax japonicus, 水産庁/Results of the insp...

github, Internet Archiv..., Yahoo! UK, Client Area - Un...

FA
Fisheries Agency

水産庁

Top page Links Japanese

Search

HOME > Results of the inspection on radioactivity level in fisheries products

Results of the inspection on radioactivity materials in fisheries products

In accordance with the "Basic Policy for Inspections on Radioactive Materials in Fishery Products" and "Concepts of Inspection Planning and the Establishment and Cancellation of Items and Areas to which Restriction of Distribution and/or Consumption of Foods concerned Applies," the Fisheries Agency, in cooperation with the relevant prefectural governments and organizations, has conducted sampling and inspections of fishery products at the major fishing ports in Fukushima and adjacent prefectures on a weekly basis to examine the possible contamination of fishery products by radioactive materials released from the Fukushima Daiichi Nuclear Plant of Tokyo Electric Power Company.

Except for the test operations for giant pacific octopus, chesnut octopus, Japanese flying squid, spear squid, horsehair crab, whelks (*Buccinum issaikai*, *Neptunea constricta*, *Neptunea inter sculpta*, and *Beringius polymaticus*), and Thornhead there are no operations of any coastal and trawel fisheries in the sea area off Fukushima Prefecture currently.

Inspections for the wide range of fish species will be continued, and the results will be announced in a prompt manner.

1. List of the inspection results

Excel file

- Results of the inspection on radioactivity materials in fisheries products (9 October 2012) (Excel: 2.596KB)
- Results of the inspection on radioactivity materials in fisheries products (Press releaser in March 2011 ~ March 2012) (Excel: 1.764KB)

PDF file

- Results of the inspection on radioactivity materials in fisheries products (9 October 2012) (PDF: 394KB)
- Results of the inspection on radioactivity materials in fisheries products (July 2012 ~ September 2012) (PDF: 1.553KB)
- Results of the inspection on radioactivity materials in fisheries products (April 2012 ~ June 2012) (PDF: 1.631KB)
- Results of the inspection on radioactivity materials in fisheries products (January 2012 ~ March 2012) (PDF: 3.039KB)
- Results of the inspection on radioactivity materials in fisheries products (October 2011 ~ December 2011) (PDF: 3.128KB)
- Results of the inspection on radioactivity materials in fisheries products (March 2011 ~ September 2011) (PDF: 2.796KB)

Caesium Sampling: Figure description

EU reference level

Black line

Compliant samples

Blue points

Non-compliant samples

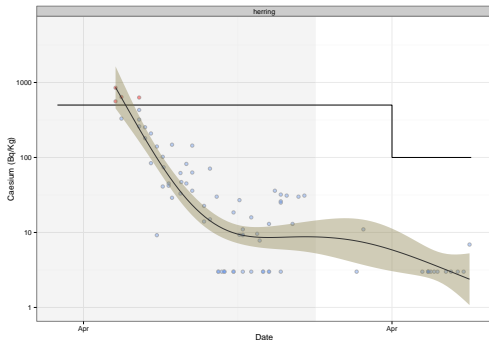
Red points

Trend (mean)

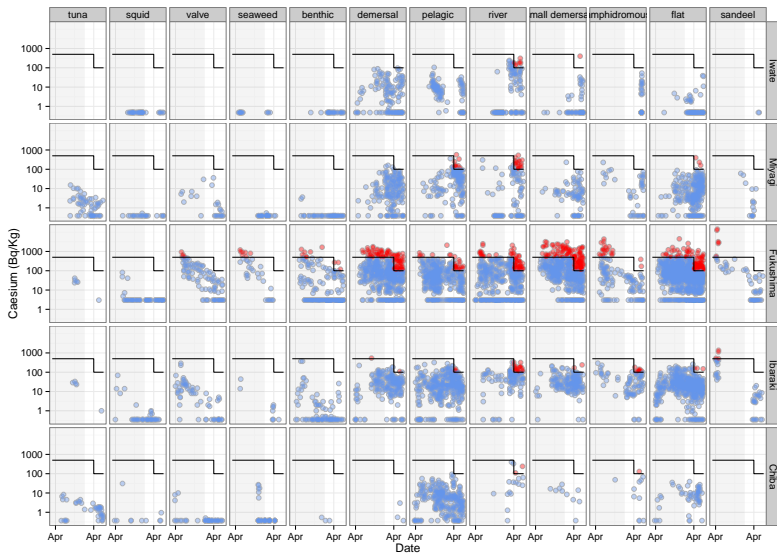
Blue line

Trend (confidence)

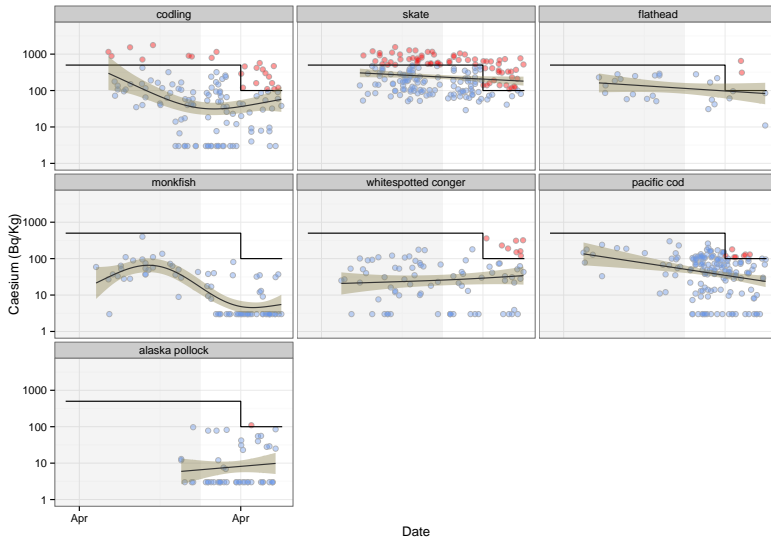
grey region



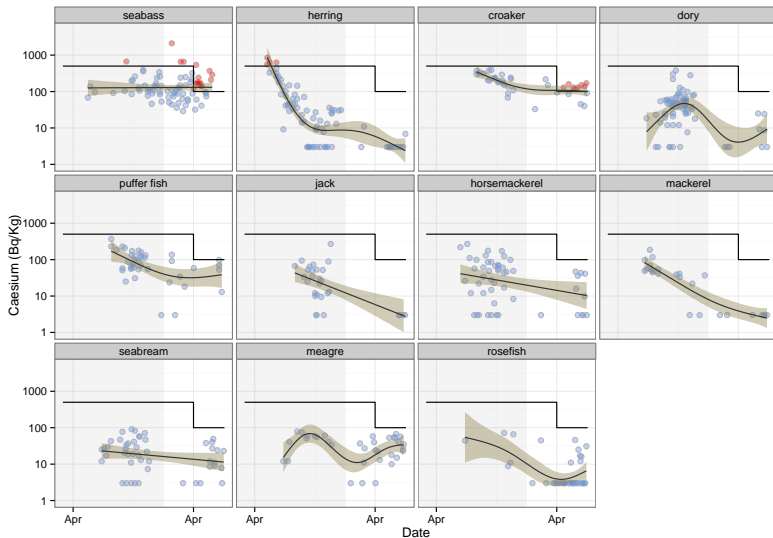
Caesium Sampling: Iwate to Chiba



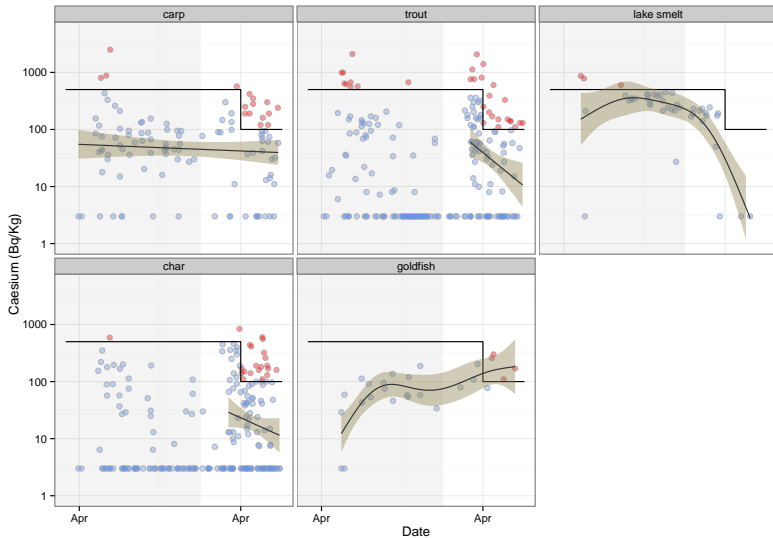
Caesium Sampling: Fukushima, demersal



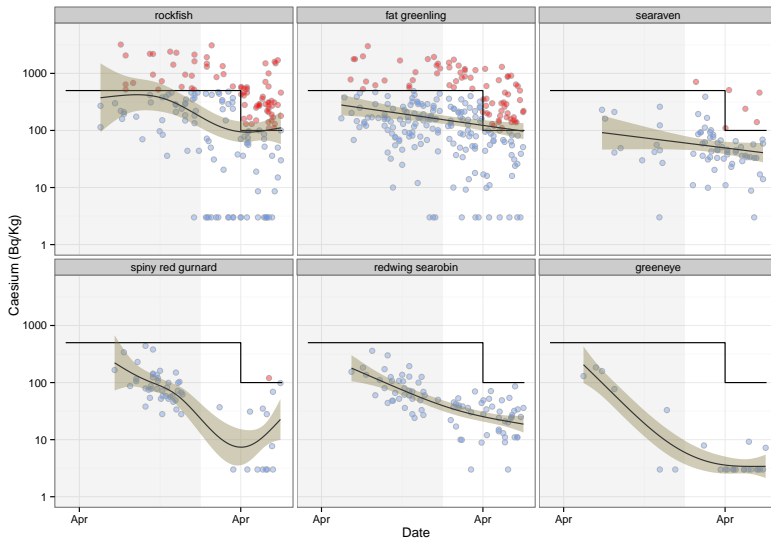
Caesium Sampling: Fukushima, pelagic



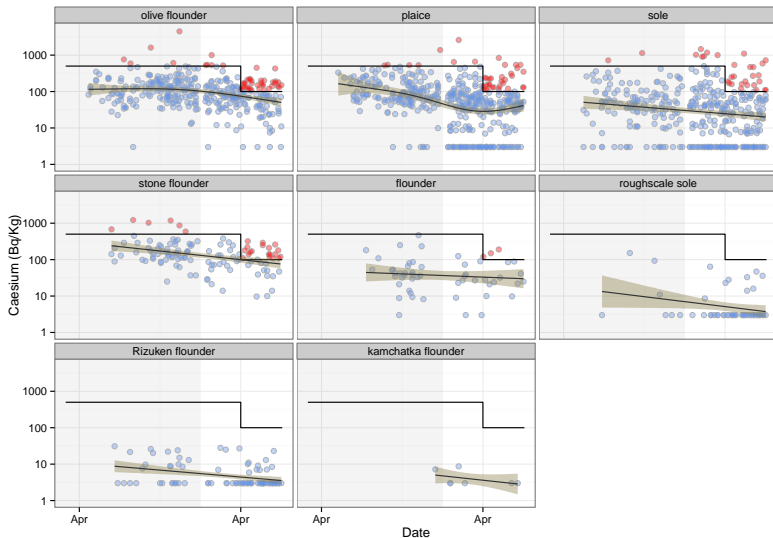
Caesium Sampling: Fukushima, river



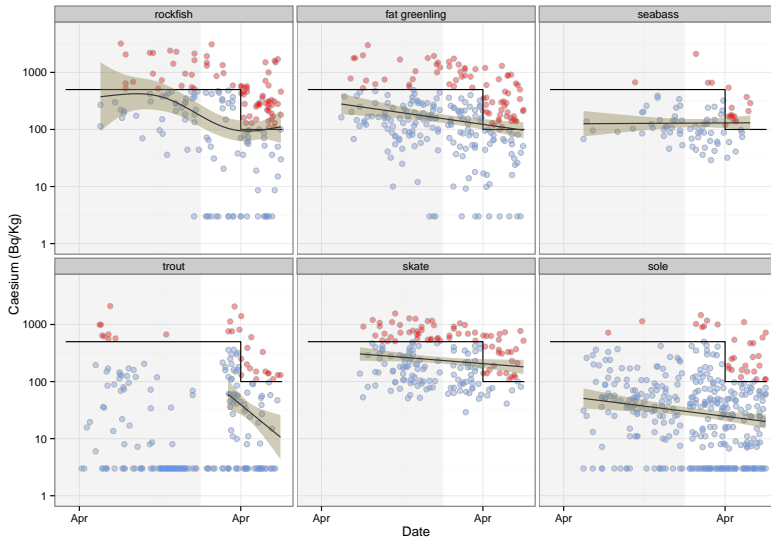
Caesium Sampling: Fukushima, small demersal



Caesium Sampling: Fukushima, flat

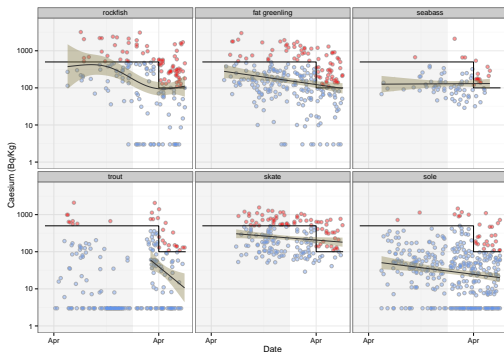


Caesium Sampling: Fukushima, Summary



Caesium Sampling: Fukushima, Summary

- Bottom dwellers
 - rockfish
 - skate
 - sole
- Coastal
 - fat greenling
 - seabass
- River
 - trout



Summary

Data from the Fukushima prefecture was focused on to identify species groups that had a higher risk of non-compliance.

- Certain types of fish present a higher risk of being non-compliant:
 - bottom dwellers
 - coastal
 - river
- Most species outside of Fukushima prefecture are compliant
- All fisheries targeting non-compliant species have been suspended. These species are not distributed to markets.
- No tuna samples found > 100 Bq/kg
- No evidence of accumulation (stable or declining trends)